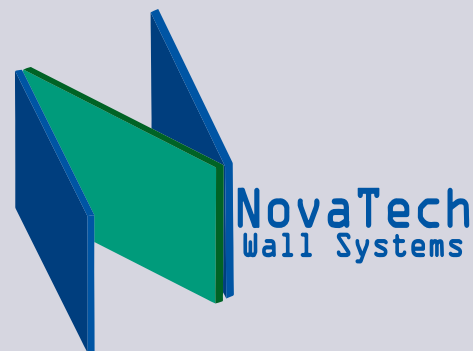


# Custom Glazed-In Panels



www.NovaTechWS.com • sales@novatechws.com • 844-815-1038

NovaTech manufactures the most sophisticated, and affordable glazed-in panel systems available!

These “glazed-in” products are the answer to all of your metal spandrel needs!

Our panels are assembled with aluminum plate facings not the industry-standard sheet metal.\*

\*MCM facings also available

## R-Values

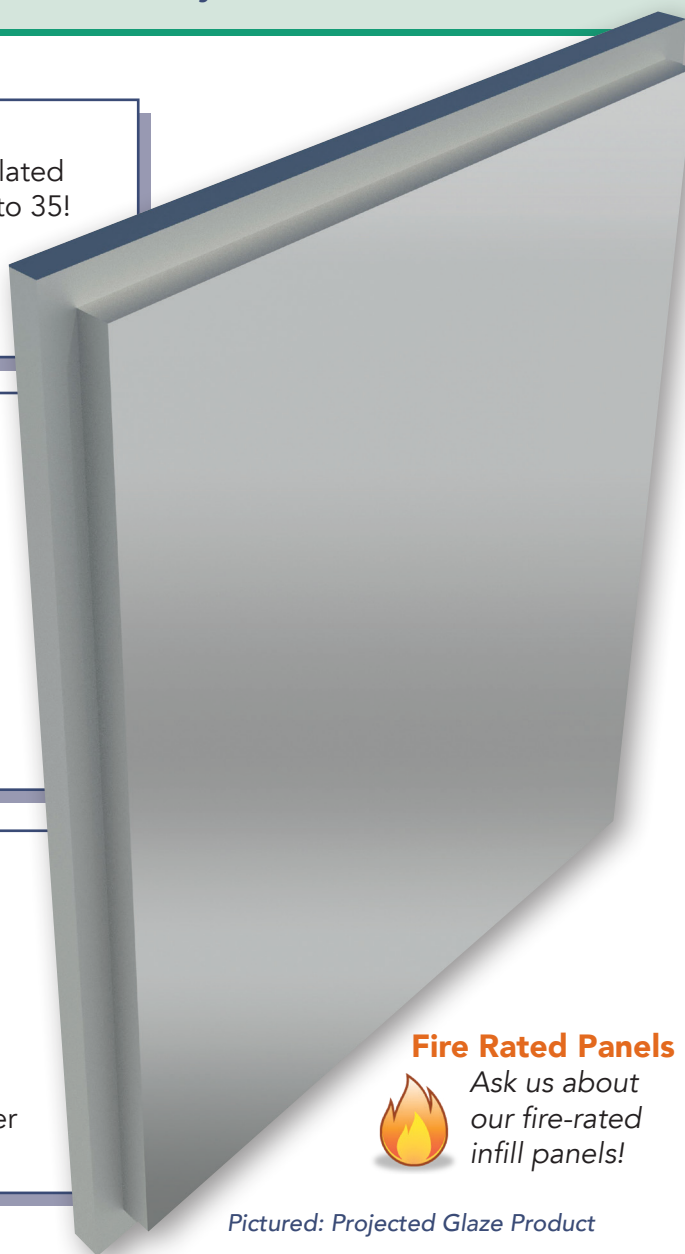
All of our systems are insulated and carry R values from 5 to 35! We partner with R-Max® for our rigid, insulated core material.

## Impact Resistance

Our standard panels are assembled from aluminum plate, either 2mm or 3mm. They are therefore highly resistant to impact damage. Both systems pass the TAS 201 for materials utilized in HVHZ areas.

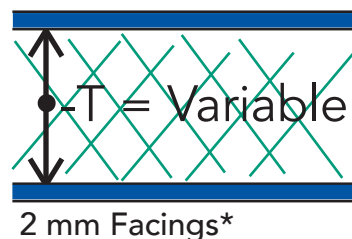
## Colors/Finishes/Textures

Because our panels are custom made, almost any color or finish is available. Of course, we do offer an excellent selection of standard colors when faster delivery is necessary.

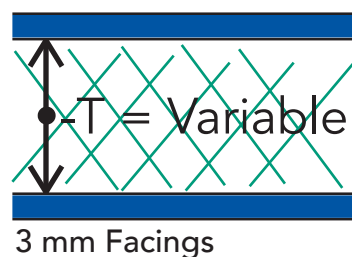


## Choose your panel facing material:

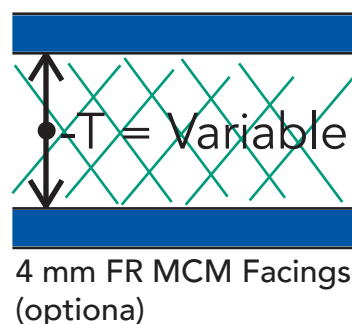
- 2 mm aluminum (standard)\*
- 3 mm aluminum (standard)
- or 4 mm FR MCM (optional)



2 mm Facings\*



3 mm Facings



4 mm FR MCM Facings (optional)

## Fire Rated Panels



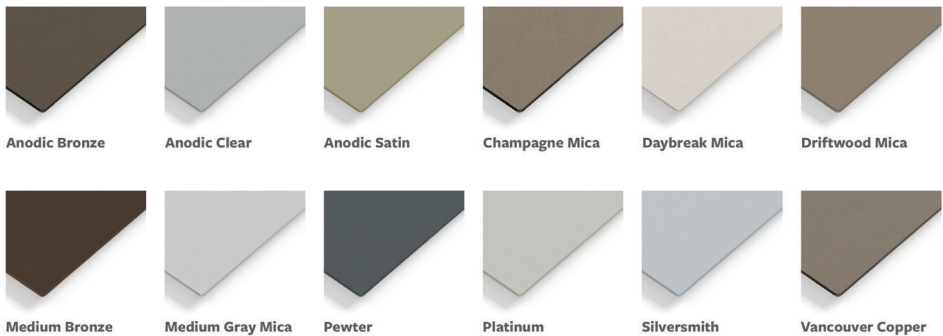
Ask us about our fire-rated infill panels!

Pictured: Projected Glaze Product

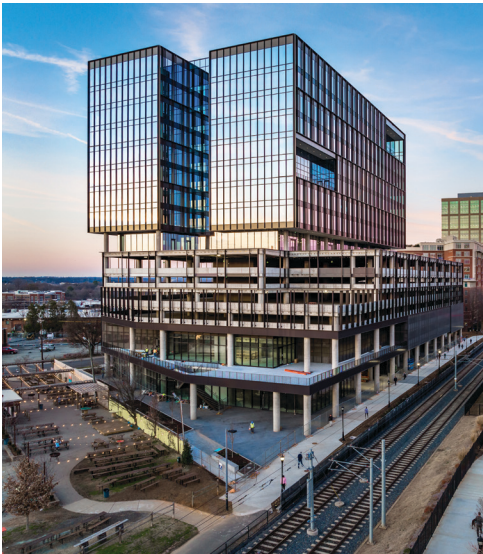
\*We utilize Arconic's Reynoclad® material for 2mm applications.

T=Variable thickness

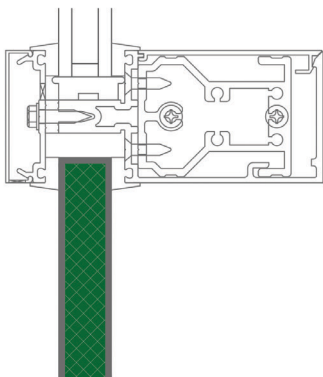
# Standard Series 2, Mica Colors\*



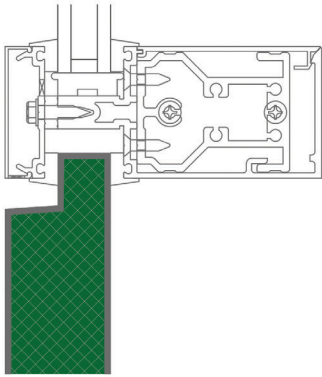
\*A myriad of other standard 2-coat and 3-coat metallic colors/finishes are available. Contact us for quick-ship color samples!



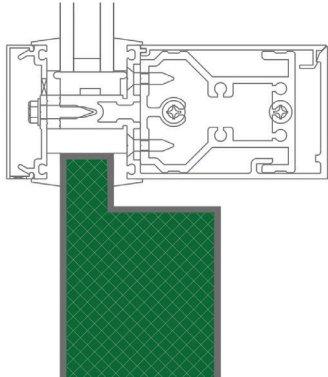
## Glazed-In Panel Types



Standard 1" Glaze (R-7)



Projected Glaze\*\* R=Variable



SupR Glaze\*\* R=Variable

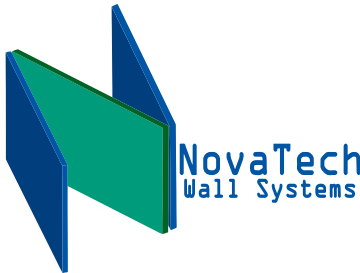
\*\*Various projections and depths are available! Call us for details, pricing and availability.



NovaTechWS.com

sales@novatechws.com

844-815-1038



Reynoclad® used by permission from Arconic Corporation